

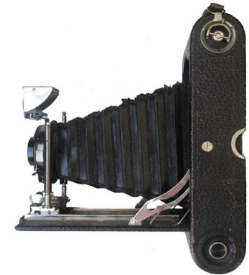
2021
ESTATE 1912 BLEND

Aperture

WINEMAKER NOTES The own-rooted, head-trained vines are structured from Positas Gravelly Loam soils and makeup two blocks of the 40-acre estate property. Their yields are minimal, but the quality is breathtaking. This old-vine plot, like many of its era, is not monovarietal but contains a unique and purposeful array of varieties; zinfandel, carignan, petite sirah, grenache, mourvèdre, sémillon, cabernet franc and a few others whose identity remains a mystery. This medley of grapes, their own historic blend, are co-fermented and aged in one 132 gallon new French oak puncheon, and 70 gallon once used French oak barrels for 16 months.

Situated next to the modern Aperture winery, constructed in 2019 with a focus on precision winemaking, and just adjacent to the Russian River, the region's history and future converge here like nowhere else. Our Estate 1912 Blend is our tribute to the farmers that came before us and a historic style of winegrowing that we aim to honor and preserve.

— WINEMAKER **JESSE KATZ**



APPELLATION

Russian River Valley

VARIETAL

Red Blend

BLEND

Co-fermented Field Blend

BARREL PROGRAM

Aged 16 months
One 132 gallon new French oak puncheon and once-used 70 gallon French oak barrels

**UNFINED, UNFILTERED
AND UN-ACIDIFIED**

VINEYARD

These own-rooted, head-trained vines planted in 1912 make up 8 acres of the 40 acre Aperture estate property and are situated next to the modern Aperture winery, built in 2019. This historic old vine plot, like many of its era, is not monovarietal but contains a unique and purposeful array of varieties.

SOIL TYPE | Positas Gravelly Loam

Our estate property consists of well-draining soils from mixed alluvial rock types as a result of our close proximity to the Russian River.