

2022
ESTATE 1912 BLEND

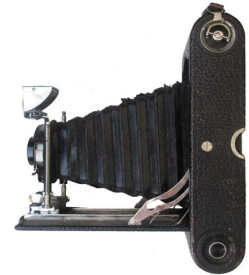
Aperture

WINEMAKER NOTES

The historic 1912 blocks are situated next to the modern Aperture winery, and just adjacent to the Russian River, where the region's history and future converge. Our Estate 1912 Blend is our tribute to the farmers that came before us and a historic style of winegrowing that we aim to honor and preserve.

These own-rooted, head-trained vines are structured from Positas Gravelly Loam soils and makeup two blocks of the 40-acre estate property. Their yields are minimal, but the quality is breathtaking. Like many of its era, these old vine blocks are not monovarietal but contain a unique and purposeful array of varieties; zinfandel, carignan, petite sirah, grenache, mourvèdre, sémillon, cabernet franc and a few others whose identity remain a mystery. These historic vines are picked, co-fermented and aged in French oak barrels.

— WINEMAKER **JESSE KATZ**



APPELLATION

Russian River Valley

VARIETAL

Red Blend

BLEND

Co-fermented Field Blend

BARREL PROGRAM

Aged 16 months

Puncheons:

15% new French Oak

30% once-used French Oak

70 Gallon Barrels:

65% neutral French Oak

**UNFINED, UNFILTERED
AND UN-ACIDIFIED**

ALC 14.2%

VINEYARD

The 1912 blocks make up 8 acres of the 40 acre Aperture estate property.

These vines thrive in a moderate climate that is heavily influenced by the pacific ocean. The cool mornings and warm afternoons allow for slower ripening that develops a deep complexity of flavors and aromas.

SOIL TYPE | Positas Gravelly Loam

Our estate property consists of well-draining soils from mixed alluvial rock types as a result of our close proximity to the Russian River.